

REPORTED CRIME COMPARISON

UNIFORM CRIME REPORTING (UCR) IS A SYSTEM DEVELOPED AND ADMINISTERED BY THE FEDERAL BUREAU OF INVESTIGATION TO STANDARDIZE AND FACILITATE THE UNIFORM COLLECTION AND ANALYSIS OF CRIME DATA IN THE UNITED STATES. THE PROGRAM PROVIDES A NATIONWIDE VIEW OF CRIME BASED ON THE SUBMISSION OF STATISTICS BY LAW ENFORCEMENT AGENCIES THROUGHOUT THE COUNTRY. BECAUSE OF THEIR SERIOUSNESS AND FREQUENCY OF OCCURRENCE, SEVEN PART I OFFENSES (CRIMINAL HOMICIDE, FORCIBLE RAPE, ROBBERY, AGGRAVATED ASSAULT, BURGLARY, LARCENY-THEFT, AND MOTOR VEHICLE THEFT) WERE CHOSEN TO COMPRISE A CRIME INDEX AND SERVE AS INDICATORS OF OUR NATION'S CRIME EXPERIENCE.

NUMBER OF PART I OFFENSES	REPORTING QUARTER		2008 VS 2007		YEAR-TO-DATE		2008 VS 2007	
	JAN - MAR 2008		JAN - MAR 2007	PERCENT CHANGE	YTD 2008		YEAR-TO-DATE 2007	PERCENT CHANGE
CRIMINAL HOMICIDE	11		11	0%	11		11	0%
FORCIBLE RAPE	37		31	+19%	37		31	+19%
ROBBERY	180		171	+5%	180		171	+5%
AGGRAVATED ASSAULT	285		338	-16%	285		338	-16%
BURGLARY	706		644	+10%	706		644	+10%
LARCENY-THEFT	2,957		3,281	-10%	2,957		3,281	-10%
MOTOR VEHICLE THEFT	694		972	-29%	694		972	-29%
TOTALS	4,870		5,448	-11%	4,870		5,448	-11%

CLEARANCES OF PART I OFFENSES *	REPORTING QUARTER		2008 VS 2007		AMOUNT OF CHANGE	YEAR-TO-DATE		2008 VS 2007		AMOUNT OF CHANGE
	NUMBER CLEARED	PERCENT CLEARED	NUMBER CLEARED	PERCENT CLEARED		NUMBER CLEARED	PERCENT CLEARED	NUMBER CLEARED	PERCENT CLEARED	
CRIMINAL HOMICIDE*	3	27%	8	73%	-63%	3	27%	8	73%	-63%
FORCIBLE RAPE	12	32%	18	58%	-33%	12	32%	18	58%	-33%
ROBBERY	59	33%	66	39%	-11%	59	33%	66	39%	-11%
AGGRAVATED ASSAULT	196	69%	242	72%	-19%	196	69%	242	72%	-19%
BURGLARY	102	14%	62	10%	+65%	102	14%	62	10%	+65%
LARCENY-THEFT	1,010	34%	986	30%	+2%	1,010	34%	986	30%	+2%
MOTOR VEHICLE THEFT	123	18%	162	17%	-24%	123	18%	162	17%	-24%
TOTALS	1,505	31%	1,544	28%	-3%	1,505	31%	1,544	28%	-3%

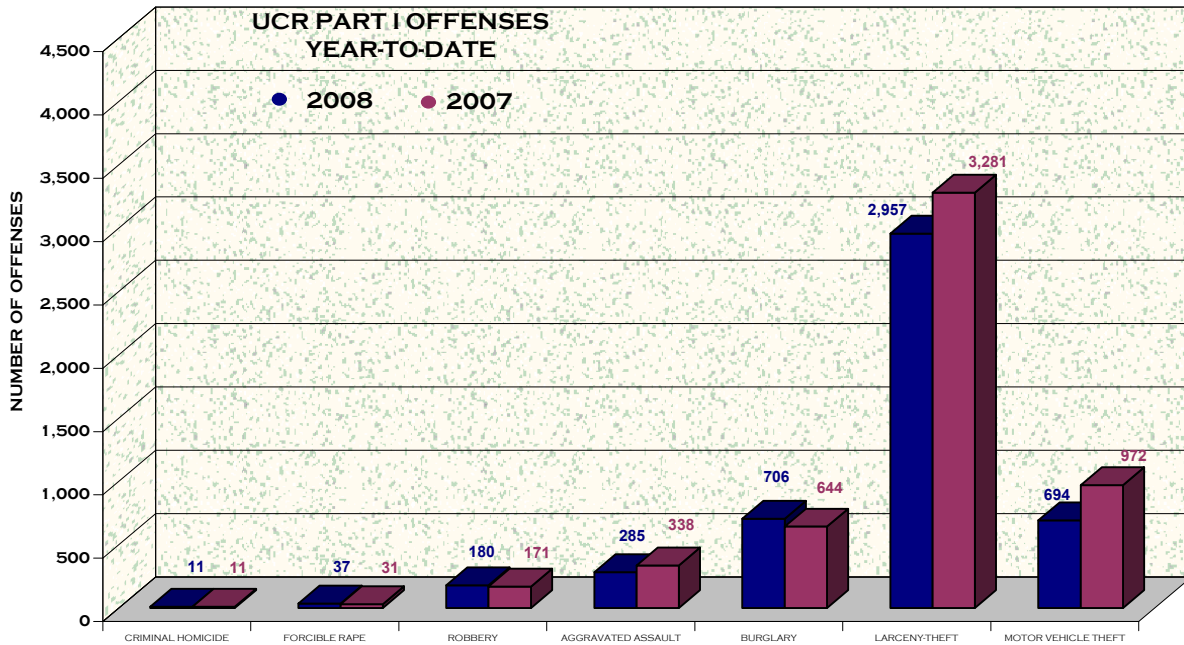
n.c. - NOT CALCULABLE

ARREST COMPARISON

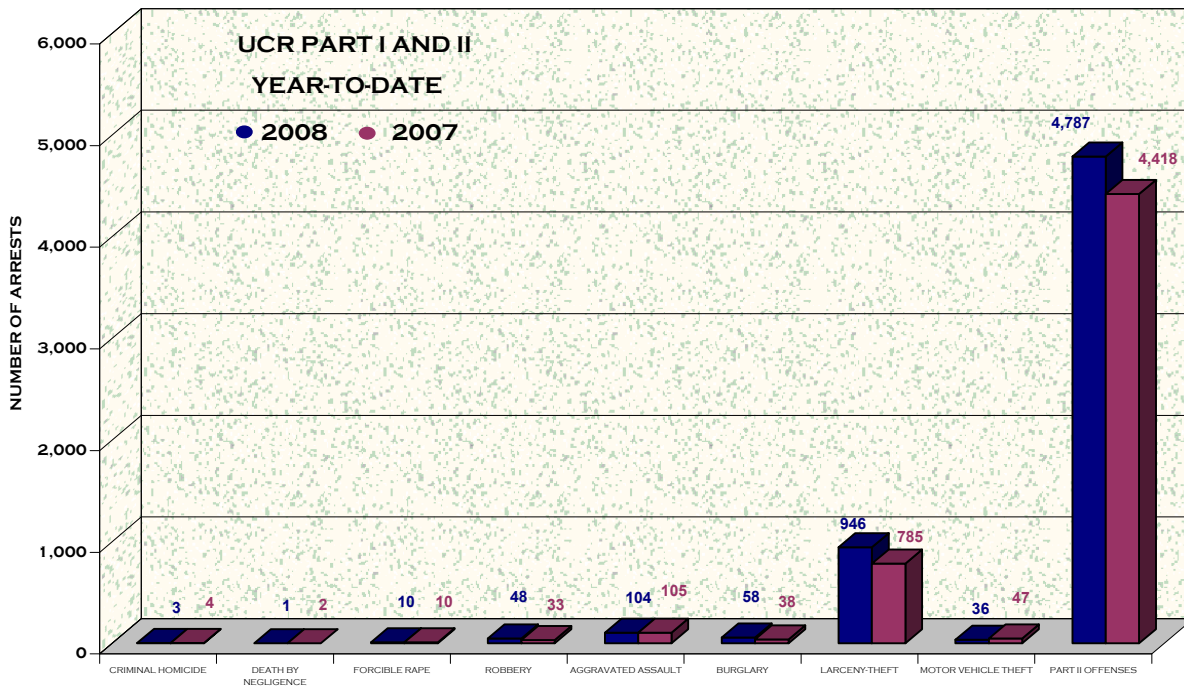
ARRESTS FOR UCR PART I AND II OFFENSES	REPORTING QUARTER	2008 VS 2007		YEAR-TO-DATE		
	JAN - MAR 2008	JAN - MAR 2007	PERCENT CHANGE	YTD 2008	YTD 2007	PERCENT CHANGE
MURDER-MANSLAUGHTER	3	4	-25%	3	4	-25%
DEATH BY NEGLIGENCE	1	2	-50%	1	2	-50%
FORCIBLE RAPE	10	10	0%	10	10	0%
ROBBERY	48	33	+45%	48	33	+45%
AGGRAVATED ASSAULT	104	105	-1%	104	105	-1%
BURGLARY	58	38	+53%	58	38	+53%
LARCENY-THEFT	946	785	+21%	946	785	+21%
MOTOR VEHICLE THEFT	36	47	-23%	36	47	-23%
ARRESTS PART I OFFENSES - TOTAL	1,206	1,024	+18%	1,206	1,024	+18%
ASSAULT, MISDEMEANOR	500	435	+15%	500	435	+15%
ARSON	9	5	+80%	9	5	+80%
FORGERY, COUNTERFEITING	47	59	-20%	47	59	-20%
FRAUD	86	117	-26%	86	117	-26%
EMBEZZLEMENT	19	14	+36%	19	14	+36%
STOLEN PROPERTY BUY, RECEIVE, POSSESS	94	117	-20%	94	117	-20%
VANDALISM / DESTRUCTION OF PROPERTY	212	172	+23%	212	172	+23%
WEAPONS, CARRY OR POSSESS	106	123	-14%	106	123	-14%
PROSTITUTION	28	14	+100%	28	14	+100%
SEX OFFENSES (EXCL RAPE)	32	36	-11%	32	36	-11%
DRUG LAW VIOLATIONS	822	714	+15%	822	714	+15%
GAMBLING	11	0	n.c.	11	0	n.c.
AGAINST FAMILY AND CHILDREN	84	76	+11%	84	76	+11%
DRIVING UNDER THE INFLUENCE	995	882	+13%	995	882	+13%
LIQUOR VIOLATIONS	483	366	+32%	483	366	+32%
DISORDERLY CONDUCT	285	265	+8%	285	265	+8%
LOITERING, PROWLING, CURFEW	0	0	n.c.	0	0	n.c.
OTHER (EXCEPT TRAFFIC)	974	1,023	-5%	974	1,023	-5%
ARRESTS PART II OFFENSES - TOTAL	4,787	4,418	+8%	4,787	4,418	+8%
TOTAL ARRESTS	5,993	5,442	+10%	5,993	5,442	+10%

n.c. - NOT CALCULABLE
n.a. - NOT AVAILABLE

OFFENSE COMPARISON UCR PART I OFFENSES

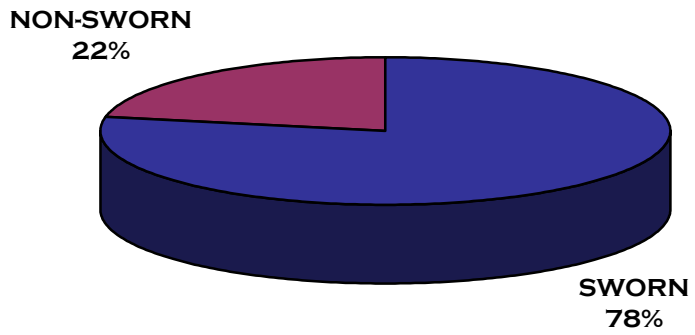


ARREST COMPARISON UCR PART I AND II OFFENSES



PERSONNEL COMPLEMENT

PERSONNEL COMPLEMENT MARCH 2008	BUDGETED PERSONNEL		ACTUAL PERSONNEL	
	SWORN	NON- SWORN	SWORN	NON- SWORN
TOTAL PERSONNEL	787	196	749	212



SWORN - NON-SWORN PERSONNEL COMPLEMENT

CALLS FOR SERVICE 911 / TELEPHONE REPORTING

911 CALLS FOR SERVICE	REPORTING QUARTER	2008 VS 2007		YEAR-TO-DATE		
	JAN - MAR 2008	JAN - MAR 2007	PERCENT CHANGE	YTD 2008	YTD 2007	PERCENT CHANGE
911 CALLS RECEIVED*	49,761	52,048	-4%	49,761	52,048	-4%
DAILY CALLS - AVERAGE	547	577	-5%	547	577	-5%
OFFICER-INITIATED TRAFFIC STOP	10,488	10,183	+3%	10,488	10,183	+3%
RESPONSE TIME (MM/SS)						
CALL TO ARRIVAL - AVG	0:08:40	0:08:48	-2%	0:08:40	0:08:48	-2%
PRIORITY I	0:06:25	0:06:44	-5%	0:06:25	0:06:44	-5%
PRIORITY II	0:10:55	0:10:52	0%	0:10:55	0:10:52	0%

*AS OF 3/00, 911 CALLS FOR SERVICE NO LONGER INCLUDE WRONG NUMBER AND ADMINISTRATIVE CALL TYPES

TELEPHONE RESPONSE SQUAD	REPORTING QUARTER	2008 VS 2007		YEAR-TO-DATE		
	JAN - MAR 2008	JAN - MAR 2007	PERCENT CHANGE	YTD 2008	YTD 2007	PERCENT CHANGE
REPORT MADE	4,226	5,918	-29%	4,226	5,918	-29%
INCIDENTS REPORTED	4,612	6,304	-27%	4,612	6,304	-27%
NO REPORT MADE	1,788	1,561	+15%	1,788	1,561	+15%
REFERRAL TO 911	616	808	-24%	616	808	-24%
LEFT MESSAGE	3,671	3,344	+10%	3,671	3,344	+10%
UNABLE TO CONTACT	822	779	+6%	822	779	+6%
TOTAL ACTIVITY	15,735	18,714	-16%	15,735	18,714	-16%

n.c. - NOT CALCULABLE
n.a. - NOT AVAILABLE

SPECIALIZED ACTIVITY

AIR SUPPORT

AIR SUPPORT	REPORTING QUARTER	2008 VS 2007		YEAR-TO-DATE		
	JAN - MAR 2008	JAN - MAR 2007	PERCENT CHANGE	YTD 2008	YTD 2007	PERCENT CHANGE
FLIGHT HOURS	439.7	392.6	+12%	439.7	392.6	+12%
TOTAL ACTIVITY	4,930	4,467	+10%	4,930	4,467	+10%
OFFICER INVOLVED	3,655	3,327	+10%	3,655	3,327	+10%
RADIO CALLS	500	564	-11%	500	564	-11%
ASSIGNMENTS	775	576	+35%	775	576	35%
TOTAL PURSUITS*	17	46	-63%	17	46	-63%
VEHICLE	6	20	-70%	6	20	-70%
FOOT	11	26	-58%	11	26	-58%
OUTSIDE AGENCY ASSISTANCE	43	73	-41%	43	73	-41%
UNIT PRESENTATION	0	4	-100%	0	4	-100%

* MAY INCLUDE ASSISTS TO OUTSIDE AGENCIES

CANINE UNIT

CANINE	REPORTING QUARTER	2008 VS 2007		YEAR-TO-DATE		
	JAN - MAR 2008	JAN - MAR 2007	PERCENT CHANGE	YTD 2008	YTD 2007	PERCENT CHANGE
CALLS FOR SERVICE	285	394	-28%	285	394	-28%
ARRESTS	112	94	+19%	112	94	+19%
SEARCHES - TOTAL	52	83	-37%	52	83	-37%
AREA	12	33	-64%	12	33	-64%
BUILDING	19	16	+19%	19	16	+19%
EVIDENCE	21	34	-38%	21	34	-38%

n.c. - NOT CALCULABLE
n.a. - NOT AVAILABLE

COMMUNITY RESOURCE CENTER

ACTIVITY	REPORTING QUARTER	2008 VS 2007		YEAR-TO-DATE		
	JAN - MAR 2008	JAN - MAR 2007	PERCENT CHANGE	YTD 2008	YTD 2007	PERCENT CHANGE
COMMUNITY RESOURCE CENTER						
CUSTOMERS SERVED	0	315	-100%	0	315	-100%
PRESENTATIONS	265	373	-29%	265	373	-29%
NUISANCE TASK FORCE						
MAYOR'S ACTION LINE COMPLAINTS	253	1,406	-82%	253	1,406	-82%
NUISANCE NOTICES ISSUED	146	990	-85%	146	990	-85%
VEHICLE TOWS	86	330	-74%	86	330	-74%
COMPLIED VEHICLE CHECKS	146	930	-84%	146	930	-84%
NEIGHBORHOOD WATCH GROUPS **	441	830	-47%	441	830	-47%
BUSINESS WATCH CONTACTS/FOLLOW-UPS	120	96	+25%	120	96	+25%
PRECINCT COMMUNITY MEETINGS - TOTAL	190	120	+58%	190	120	+58%
NORTHWEST PRECINCT	27	20	+35%	27	20	+35%
NORTHEAST PRECINCT	22	19	+16%	22	19	+16%
SOUTHEAST PRECINCT	107	78	+37%	107	78	+37%
SOUTHWEST PRECINCT	34	3	+1033%	34	3	+1033%

* PRESENT QUARTERLY FIGURES

SCHOOL RESOURCE OFFICER ACTIVITY **	REPORTING QUARTER	2008 VS 2007		YEAR-TO-DATE		
	JAN - MAR 2008	JAN - MAR 2007	PERCENT CHANGE	YTD 2008	YTD 2007	PERCENT CHANGE
INCIDENT REPORTS	1,323	2,098	-37%	1,323	2,098	-37%
ARRESTS - FELONY	19	11	+73%	19	11	+73%
ARRESTS - MISDEMEANOR	231	257	-10%	231	251	-8%
CITATIONS - TRAFFIC	27	30	-10%	27	37	-27%
ASSISTS TO PATROL/DETECTIVES	237	218	+9%	237	233	+2%
1st QUARTER ACTIVITY HIGHLIGHTS						
CERT TRAINING - MULTIPLE LOCATIONS						
CITIZEN CORP MEETING						
PAC MEETINGS						
IDENTITY PRESENTATION AT BETHANY LUTHERAN CHURCH						
WEED AND SEED MEETINGS						
CITIZENS ACADEMY						
CRIME PREVENTION MEETING WITH ELKHORN CHAMBER OF COMMERCE						

** DATA INITIATED IN SEPTEMBER 1999

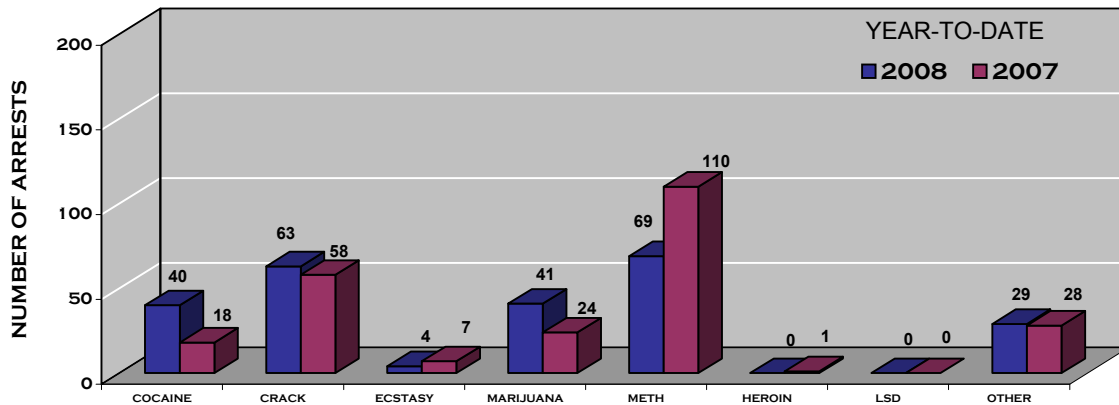
n.c. - NOT CALCULABLE
n.a. - NOT AVAILABLE

DRUG ENFORCEMENT

DRUG ENFORCEMENT ARRESTS AND SEIZURES	REPORTING QUARTER	2008 VS 2007		YEAR-TO-DATE		
	JAN - MAR 2008	JAN - MAR 2007	PERCENT CHANGE	YTD 2008	YTD 2007	PERCENT CHANGE
FELONY ARRESTS - TOTAL	246	246	0%	246	246	0%
COCAINE	40	18	+122%	40	18	+122%
CRACK	63	58	+9%	63	58	+9%
ECSTASY	4	7	-43%	4	7	-43%
MARIJUANA	41	24	+71%	41	24	+71%
METHAMPHETAMINES	69	110	-37%	69	110	-37%
HEROIN	0	1	-100%	0	1	-100%
LSD	0	0	n.c.	0	0	n.c.
OTHER	29	28	+4%	29	28	+4%
SEIZURES*						
COCAINE	995	4,542	-78%	995	4,542	-78%
CRACK	525	254	+107%	525	254	+107%
ECSTASY	46	79	-42%	46	79	-42%
MARIJUANA	119,140	560,695	-79%	119,140	560,695	-79%
METHAMPHETAMINES	14,920	4,405	+239%	14,920	4,405	+239%
HEROIN	0	21	-100%	0	21	-100%
LSD**	0	0	n.c.	0	0	n.c.
OTHER**	837	369	+127%	837	369	+127%

n.c. - NOT CALCULABLE
n.a. - NOT AVAILABLE

* WEIGHT = GRAMS
** WEIGHT = DOSAGE UNITS



GANG ACTIVITY

GANG ACTIVITY	REPORTING QUARTER	2008 VS 2007		YEAR-TO-DATE		
	JAN - MAR 2008	JAN - MAR 2007	PERCENT CHANGE	YTD 2008	YTD 2007	PERCENT CHANGE
HOMICIDE	2	1	+100%	2	1	+100%
SEXUAL ASSAULT	4	0	n.c.	4	0	n.c.
*FELONY:						
CRIMINAL MISCHIEF DRIVE-BY D.O.P. INCIDENT	0	4	-100%	0	4	-100%
FELONY ASSAULT DRIVE-BY INCIDENT:	5	12	-58%	5	12	-58%
ALL OTHER	23	10	+130%	23	10	+130%
ROBBERY (SUSPECTS)	6	0	n.c.	6	0	n.c.
BURGLARY (SUSPECTS)	11	0	n.c.	11	0	n.c.
INTIMIDATION OF WITNESSES	0	0	n.c.	0	0	n.c.
*OTHER FELONY:						
FELONY DRUGS	35	16	n.c.	35	16	n.c.
FELONY ASSAULT (NOT GUN)	3	3	n.c.	3	3	n.c.
FELONY FIREARMS	13	13	n.c.	13	13	n.c.
TERRORISTIC THREATS	5	3	n.c.	5	3	n.c.
TOTAL ACTIVITY - FELONY	107	62	+73%	107	62	+73%
*MISDEMEANOR:						
MISDEMEANOR DRUGS	86	39	+121%	86	39	+121%
DEFACING PROPERTY (GRAFFITI)	856	529	+62%	856	529	+62%
*OTHER MISDEMEANORS:						
CCW - GUN	9	5	n.c.	9	5	n.c.
CCW - OTHER	2	2	n.c.	2	2	n.c.
DOMESTIC VIOLENCE	6	4	n.c.	6	4	n.c.
ASSAULT	30	25	n.c.	30	25	n.c.
ALL OTHER	119	39	+205%	119	39	+205%
TOTAL ACTIVITY - MISDEMEANOR	1108	643	+72%	1108	643	+72%
TOTAL ACTIVITY FELONY & MISDEMEANOR	1,215	705	+72%	1,215	705	+72%
SUSPECTED GANG MEMBERS***	2,446	3,412	-28%	2,446	3,412	-28%
NEW GANG MEMBERS	99	n.a.	n.c.	99	n.a.	n.c.
GANG MEMBERS DELETED	1,184	n.a.	n.c.	1,184	n.a.	n.c.
SUSPECTED NUMBER OF GANGS	29	28	+4%	29	28	+4%

*CATEGORIES HAVE BEEN BROKEN DOWN INTO SUB-CATEGORIES AS OF 01 /2007. THE TOTALS FOR FELONIES AND MISDEMEANORS ARE COMPARABLE TO PREVIOUS YEARS

n.c. - NOT CALCULABLE
n.a. - NOT AVAILABLE

** FELONIES MAY INCLUDE, BUT ARE NOT LIMITED TO, THE FOLLOWING OFFENSE TYPES: FLIGHT TO AVOID ARREST, CARRYING A CONCEALED WEAPON, OBSTRUCTING AN OFFICER, FELONY ASSAULT, DESTRUCTION OF PROPERTY - VEHICLE, AND FRAUD

*** DECREASE IN GANG MEMBERS DUE TO REGULAR PURGING OF INACTIVE GANG MEMBERS AS REQUIRED BY FEDERAL GUIDELINES

MOUNTED PATROL

MOUNTED PATROL	REPORTING QUARTER	2008 VS 2007		YEAR-TO-DATE		
	JAN - MAR 2008	JAN - MAR 2007	PERCENT CHANGE	YTD 2008	YTD 2007	PERCENT CHANGE
CALLS FOR SERVICE	55	74	-26%	55	74	-26%
O/I ACTIVITIES	596	893	-33%	596	893	-33%
ARRESTS	32	75	-57%	32	75	-57%
TRAFFIC STOPS	38	51	-25%	38	51	-25%
CITATIONS	143	154	-7%	143	154	-7%
ASSIGNMENTS	932	857	+9%	932	857	+9%

INTERNAL AFFAIRS ACTIVITY

ACTIVITY	REPORTING QUARTER	2008 VS 2007		YEAR-TO-DATE		
	JAN - MAR 2008	JAN - MAR 2007	PERCENT CHANGE	YTD 2008	YTD 2007	PERCENT CHANGE
CITIZEN COMPLAINTS						
COMPLAINTS NOT FORMALIZED	3	16	-81%	3	16	-81%
FORMAL CITIZEN COMPLAINTS	22	16	+38%	22	16	+38%
TOTAL	25	32	-22%	25	32	-22%
INTERNAL COMPLAINTS						
TOTAL	12	11	+9%	12	11	+9%
DISPOSITIONS						
NOT SUSTAINED	8	19	-58%	8	19	-58%
SUSTAINED	16	21	-24%	16	21	-24%
EXONERATED	7	15	-53%	7	15	-53%
UNFOUNDED	1	2	-50%	1	2	-50%
NO FINDING/COURT ISSUE	1	2	-50%	1	2	-50%
TOTAL	33	59	-44%	33	59	-44%

n.c. - NOT CALCULABLE
n.a. - NOT AVAILABLE

EVIDENCE AND PROPERTY

EVIDENCE AND PROPERTY	REPORTING QUARTER	2008 VS 2007		YEAR-TO-DATE		
	JAN - MAR 2008	JAN - MAR 2007	PERCENT CHANGE	YTD 2008	YTD 2007	PERCENT CHANGE
ITEMS RECOVERED	8,040	7,586	+6%	8,040	7,586	+6%
ITEMS RELEASED, SOLD, OR DESTROYED	8,317	7,730	+8%	8,317	7,730	+8%
FIREARMS RECEIVED	159	165	-4%	159	165	-4%
FIREARMS DESTROYED	115	281	-59%	115	281	-59%
CASH DEPOSIT IN GENERAL FUND	\$1,168	\$39,892	-97%	\$1,168	\$39,892	-97%
REVENUE GENERATED MONTHLY AUCTION	\$3,287	\$5,007	-34%	\$3,287	\$5,007	-34%
CURRENCY ON HAND *	\$4,070,690	\$3,815,628	+7%	\$4,070,690	\$3,815,628	+7%

* TOTALS FORWARDED TO CITY FINANCE

TRAINING

TRAINING	REPORTING QUARTER	2008 VS 2007		YEAR-TO-DATE		
	JAN - MAR 2008	JAN - MAR 2007	PERCENT CHANGE	YTD 2008	YTD 2007	PERCENT CHANGE
TRAINING CLASSES - TOTAL	43	54	-20%	43	54	-20%
SWORN / NON-SWORN	39	52	-25%	39	52	-25%
CITIZENS/GUESTS	4	2	+100%	4	2	+100%
TRAINING HOURS - TOTAL	110,283	12,380	+791%	110,283	12,380	+791%
SWORN / NON-SWORN	106,526	11,545	+823%	106,526	11,545	+823%
CITIZENS/GUESTS	3,757	835	+350%	3,757	835	+350%
PARTICIPANTS - TOTAL	1,722	1,221	+41%	1,722	1,221	+41%
SWORN	1,175	1,126	+4%	1,175	1,126	+4%
NON-SWORN	21	14	+50%	21	14	+50%
CITIZENS/ GUESTS	526	81	+549%	526	81	+549%

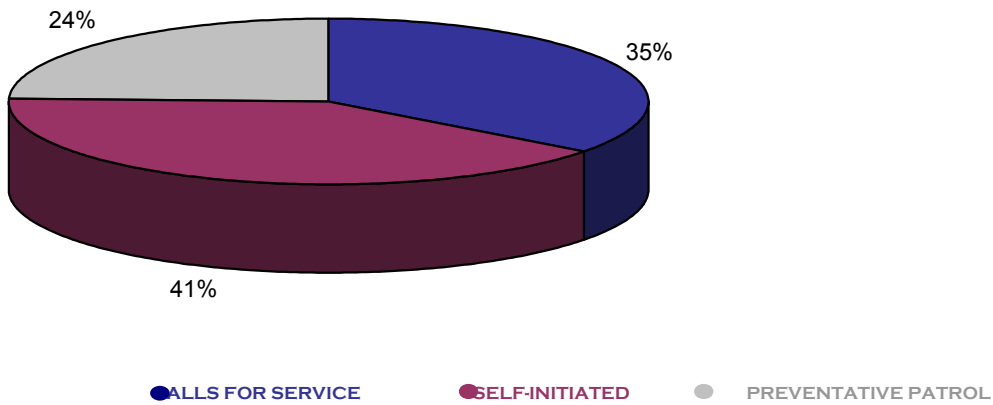
MISDEMEANOR WARRANTS

WARRANTS	REPORTING QUARTER	2008 VS 2007		YEAR-TO-DATE		
	JAN - MAR 2008	JAN - MAR 2007	PERCENT CHANGE	YTD 2008	YTD 2007	PERCENT CHANGE
WARRANTS CLEARED BY ARREST	1,559	1,485	+5%	1,559	1,485	+5%
PERSONS ARRESTED	1,352	1,229	+10%	1,352	1,229	+10%
CANCELLED BY COURT	1,054	1,350	-22%	1,054	1,350	-22%
NEW WARRANTS ISSUED	2,228	2,389	-7%	2,228	2,389	-7%

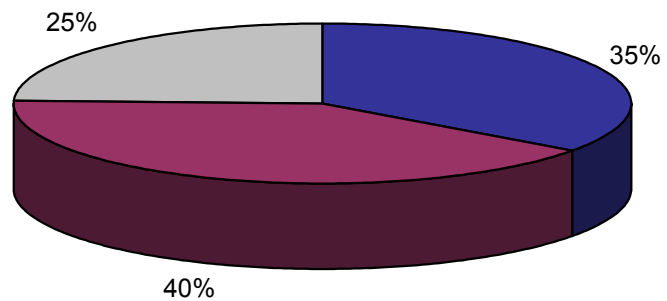
n.c. - NOT CALCULABLE
n.a. - NOT AVAILABLE

UNIFORM OFFICERS' WORKDAY

MARCH 2008



YEAR-TO-DATE 2008



FIGURES REPRESENT AVERAGE NUMBER OF MINUTES PER OFFICER PER DAY FOR NOTED ACTIVITY

ADMINISTRATIVE SERVICES

ADMINISTRATIVE SERVICES	REPORTING QUARTER	2008 VS 2007		YEAR-TO-DATE		
	JAN - MAR 2008	JAN - MAR 2007	PERCENT CHANGE	YTD 2008	YTD 2007	PERCENT CHANGE
CRIMINAL AND NON-CRIMINAL INCIDENT REPORTS PROCESSED	22,785	25,369	-10%	22,785	25,369	-10%
REPORT COPIES	4,495	5,541	-19%	4,495	5,541	-19%
CRIMINAL HISTORY REQUESTS	1,801	1,541	+17%	1,801	1,541	+17%
GUN REGISTRATIONS	1,044	967	+8%	1,044	967	+8%

n.c. - NOT CALCULABLE
n.a. - NOT AVAILABLE